



NDA I 2016_General Ability

Total Time: 150

Total Marks: 600.0

Solution 1

When the bus was at full speed, its brakes failed and an accident was **inevitable**.

Explanation :

Inevitable means a situation that cannot be avoided.

Hence, the correct answer is **option A**.

Solution 2

To explain his design to his visitors, the architect **sketched** a simple plan on the blackboard.

Explanation :

sketched means giving a general outline of something.

Hence correct **option is (c)**.

Solution 3

Though Bonsai, a well-known art form, originated in China, it was **perfected** by the Japanese.

Explanation :

Perfected means made free from faults or defects, made as fine as possible.

Hence correct **option is (c)**.

Solution 4

He is greatly admired for his **decorous** behaviour.

Explanation :

Decorous means polite.

Hence, **option (d)** is correct.

Solution 5

Would you mind explaining to the Principal how the trouble started?

Explanation:

Explaining means to describe something.

Hence, **option (c)** is correct.

Solution 6

Vaccination will make people immune to certain diseases for a given period.

Explanation:

"to" is used as an infinitive of purpose to mean "in order to".

Hence, **option (b)** is correct.

Solution 7

The two boys looked so alike that it was impossible to distinguish between them.

Explanation :

Distinguish means to differentiate between two things.

Hence, **option (c)** is correct.

Solution 8

The campers **pitched** their tents at the base of the mountain.

Explanation:

Pitched means to set up or fix something in position.

Hence, **option (c)** is correct.

Solution 9

The enemy had captured him and his life was at stake. Still he refused to divulge the state secrets.

Explanation:

Divulge means to disclose or reveal.

Hence, **option (a)** is correct.

Solution 10

He handled the machine with clumsy fingers.

Explanation :

Deft means neat and skillful.

Clumsy means unskillful in doing things.

Hence, the correct answer is **option D.**

Solution 11

I was deeply affected by his rude behavior.

Explanation:

Urbane means sophisticated.

Rude is referred to someone who is badly mannered.

Hence, the correct answer is **option B**

Solution 12

His boldness proved costly.

Explanation:

Timidity means something which lacks courage.

Boldness means being strong and confident.

Hence, the correct answer is **option B.**

Solution 13

Arrangements were made to handle the small gathering tactfully.

Explanation:

Mammoth means very big or large.

Small means compact or little.

Hence, the correct answer is **option B.**

Solution 14

He was inattentive in his work when I walked in.

Explanation:

Engrossed means being totally preoccupied with something.
Inattentive means being distracted or not paying attention to something.

Hence, the correct answer is **option B**

Solution 15

These are the main points of the **following** paragraph.

Explanation :

Preceding means to come before
Following means to come after

Hence, the correct answer is **option A**

Solution 16

He made a **wild** guess.

Explanation :

Shrewd means acute judgement.
Wild means something that is not based on sound reasoning.

Hence, the correct answer is **option B.**

Solution 17

He is suffering from a **mild** cough.

Explanation :

Severe means of very great intensity.
Mild means very nominal.

Hence, the correct answer is **option B.**

Solution 18

Individually, the effect of these drugs is quite bad.

Explanation:

Cumulatively means collective.
Individually means for a particular person.

Hence, the correct answer is **option A.**

Solution 19

He was **unnoticeable** because of his colorful shirt.

Explanation:

Conspicuous means which is clearly visible.
Unnoticeable means not clearly visible.

Hence, the correct answer is **option D.**

Solution 20

He hates these **occasional** arguments with his friend.

Explanation:

Continual means something which is continuous with no interruptions.
Occasional means which happens irregularly.

Hence, the correction answer is **option C.**

Solution 21

She said that she was understanding his point of view very well.

Explanation:

She said that she understood his point of view very well.

Hence, the correct answer is **option A.**

Solution 22

All the houses having been washed away by the floods, the villagers sought shelter in the panchayat office.

Explanantion:

No error spotted.

Hence, the correct answer is **option D**

Solution 23

It is necessary for us **to familiarize with** and get used to the ways of the people among whom we live.

Explanation:

It is necessary for us **to get familiarized with** and get used to the ways of the people among whom we live.

Hence, the correct answer is **option A**

Solution 24

The mother asked her child **why did she cry out** in her sleep.

Explanation:

The mother asked her child **why she cried out** in her sleep.

Hence, the correct answer is option B

Solution 25

I asked him that why he was angry but he did not answer.

Explanation:

I did ask him that why he was angry but he did not answer.

Hence, the correct answer is **option A.**

Solution 26

Had I not taken ill, I would have sent you my research paper much earlier.

Explanation:

Had I not fallen ill, I would have sent you my research paper much earlier.

Hence, the correct answer is **option A.**

Solution 27

The barn owl helps the farmer by destroying rats which could, if left unchecked, do a lot of damage to the crops.

Explanation:

The barn owl helps the farmer by destroying rats which could, if left unchecked, do a lot of damage to the crops.

Hence, the correct answer is **option D.**

Solution 28

He **had gone** home three weeks ago and was expected back yesterday, but he has not come yet.

Explanation:

He **went** home three weeks ago and was expected back yesterday, but he has not come yet.

Hence, the correct answer is **option A.**

Solution 29

We must sympathize **for others** in their troubles.

Explanation:

We must sympathize **with other** in their troubles.

Hence, the correct answer is **option B.**

Solution 30

The scientists in America **are trying for long** to discover the genes responsible for ageing.

Explanation :

The scientists in America **are trying since long** to discover the genes responsible for ageing.

Hence, the correct answer is **option B.**

Solution 31

When he heard the rhetorical speech of the leader, he was **carried away** by his enthusiasm.

Hence, the correct answer is **option C**

Solution 32

After the heavy rains last week, the water in the rose another two feet.

Hence, the correct answer is **option A**.

Solution 33

One can live and work in a town without being aware of the daily march of the sun across the sky without ever seeing the moon and stars.

Hence, the correct answer is **option C**.

Solution 34

Applications of those who are graduates will be considered.

Hence, the correct answer is **option D**.

Solution 35

It has rained heavily all through this week.

Hence, the correct answer is **option A**.

Solution 36

The sparrow took no notice of the bread.

Hence, the correct answer is **option A**.

Solution 37

As he spoke about his achievements, his high claims amused us.

Hence, the correct answer is **option D**.

Solution 38

We ought to stand up what is right.

Hence, the correct answer is **option C**.

Solution 39

He enjoys telling stories to children.

Hence, the correct answer is **option B**.

Solution 40

In a few minutes' time, when the clock strikes six, I shall have been

waiting here for an hour.

Hence, the correct answer is **option B.**

Solution 41

Suddenly there was a bright flash, followed by a **very loud** explosion.

Deafening means something extremely noisy same as “very loud” .

Hence, the correct answer is **option D.**

Solution 42

He showed **commendable** courage during the crisis.

Exemplary means something with a praise same as “Commendable” .

Hence, the correct answer is **option C.**

Solution 43

When the new teacher entered the classroom, he found the pupils **impatient**.

Explanation:

Restive means highly restless and not able to remain still because of boredom “Impatient”.

Hence, the correct answer is **option D.**

Solution 44

There is no **scarcity** of talent in this country.

Explanation:

Dearth means no shortage of same as “Scarcity”

Hence, the correct answer is **option A**

Solution 45

The servants went away to their quarters.

Explanation:

Retired means done working for the day same as "Went away"

Hence, the correct answer is **option B.**

Solution 46

The navy gave strategic support to the marines.

Explanation:

Tactical means something done with full awareness and planning same as "Strategic"

Hence, the correct answer is **option B.**

Solution 47

A genius tends to differ from the routine way of thinking.

Explanation :

Deviate means drifting away from an established course same as 'Differ'

Hence, the correct answer is **option D.**

Solution 48

He was greatly weakened by an attack of influenza.

Explanation:

Debilitated means feeling exhausted ,tired and drained out same as "Weakened".

Hence, the correct answer is **option B.**

Solution 49

His efforts at helping the poor are praiseworthy.

Explanation:

Laudable means something worth crediting same as "Praiseworthy"

Hence, the correct answer is **option D.**

Solution 50

His conduct brought him rebuke from all quarters.

Explanation:

Reproach means to be criticized same as "Rebuke"

Hence, the correct answer is **option A.**

Solution 51

Petroleum is a mixture of hydrocarbons of different molecular weights and densities. In addition, the grade of a petroleum sample is determined mainly on the basis of the relative proportion of different hydrocarbons present in it. This makes both the statements correct. However, the second statement is not an explanation of the first statement.

Hence, the correct answer is option B.

Solution 52

Red sea is one of the saltiest water bodies in the world. This is because of the high rate of evaporation and very less precipitation. Thus both the statements are true and statement II is the correct explanation of statement I.

Hence, the correct answer is option A.

Solution 53

Volcanic eruptions are often followed or accompanied by few low-intensity earthquakes. During eruption, lava, dust, water vapours, and gases are ejected out of the volcanoes. Thus, both the given statements are true, but statement II is not the explanation of statement I.

Hence, the correct answer is option B.

Solution 54

Statement I is true but Statement II is false.

Hence, the correct answer is **option C.**

Solution 55

Both the statements are individually true and Statement II is the correct explanation of Statement I.

Hence, the correct answer is **option A**.

Solution 56

We know that, $\text{density} = \frac{\text{Mass}}{\text{Volume}}$

This makes $\text{Volume} = \frac{\text{Mass}}{\text{Density}}$

Now, since water and mercury were filled in the same container, volume remains same for both.

Thus, $V_w = V_m$

$$\text{So, } \frac{M_w}{D_w} = \frac{M_m}{D_m} \quad \dots(i)$$

Density of mercury = $13.6 \times 10^3 \text{ kg/m}^3 = 13.6 \text{ g/cm}^3$

Density of water = 1 g/cm^3

Putting the above values in equation (i):

$$\frac{X}{1} = \frac{Y}{13.6}$$

$$Y = 13.6 X$$

Hence, the correct answer is option C.

Solution 57

Density of water is maximum at 4°C , i.e. 1 g/cm^3 . This is so because when ice melts, it initially contracts from 0 to 4°C , and then expands up to 100°C .

Hence, the correct answer is option C.

Solution 58

The red phosphorus is used in the manufacture of safety matches, since it is stable at room temperature than white phosphorus, and doesn't fume on getting in contact with air.

Hence, the correct answer is option A.

Solution 59

Among the given alternatives, freezing of water is not a chemical change. On freezing water, ice is formed, which, on melting, gets converted into water again. This makes it a physical change, as in chemical change, new products are formed that can not be reversed back to their original state.

Hence, the correct answer is option C.

Solution 60

Nitrogen oxides, carbon monoxides, and benzene are the main pollutants found in vehicular emissions that are harmful to humans and other living organisms, even at low concentrations.

Hence, the correct answer is option D.

Solution 61

The correct order is **Bhubaneshwar - Patna - Rishikesh - New Delhi.**

Explanation:

Bhubaneshwar – 85° 0' 52" E, Patna – 85° 0' 13" E, Rishikesh – 78° 0' 26" E, New Delhi- 77° 0' 15" E. so, If we look at the longitude on which these cities fall, New Delhi is at the extreme west and Bhubaneshwar at the extreme East amongst these four options.

Hence, the correct answer is **option A.**

Solution 62

The force of attraction between two bodies of equal mass is given by:

$$F = G \frac{m^2}{r^2}$$

If the mass of both the objects is doubled, keeping the distance of separation (or r) constant, the force will become:

$$F' = G \frac{(2m)^2}{r^2} = 4 G \frac{m^2}{r^2}$$

So, $F' = 4 F$

Hence, the correct answer is option C.

Solution 63

When a body experiences free fall, its potential energy slowly gets converted into kinetic energy, keeping the total energy of the body constant. When fallen from a height of 20 m, then at a distance of 5 m from the point of fall, the body completes only one-fourth distance. So, it will correspondingly lose one-fourth of its potential energy, which will be converted into equal amount of kinetic energy.

Hence, the correct answer is option B.

Solution 64

Soaps are the sodium or potassium salts of long chain fatty acids. Since stearic acid, oleic acid, and palmitic acid all are fatty acids, they all are capable of forming soaps.

Hence, the correct answer is option D.

Solution 65

Mass of a particular substance is defined as the amount of matter present in that substance. Mass of a body remains constant, irrespective of the place or gravitational force acting on it.

Hence, the correct answer is option B.

Solution 66

Presence of all the four substances, i.e. pesticide residues, lead, metanil yellow, or mercury, in the food items is harmful to health. Consumption of the contaminated food items can lead to serious health issues.

Hence, the correct answer is option D.

Solution 67

In India, glacial terraces known as "Karewas" are found in **Jhelum valley**

Explanation:

Plateau like terraces are found above the plains of Jhelum river in Kashmir. The rich fertile soil feeds high bio-diversity present here.

Hence, the correct answer is **option B.**

Solution 68

Structurally, the Meghalaya region is a part of **Deccan Plateau**.

Explanation:

The Meghalayan plateau is formed of hard ancient rock which was part of the Deccan Plateau which has been formed as a result of the volcanic activities.

Hence, the correct answer is **option B**.

Solution 69

The momentum of a body is directly proportional to the mass of that body and its velocity (as $p = mv$). In this case, the velocities of both the bodies are same, so the momentum of the two can be compared through their masses. Since the mass of B is double to that of A, its momentum will also be double to that of A.

Hence, the correct answer is option A.

Solution 70

During solar eclipse **the moon comes in between the sun and the earth.**

Explanation:

When the moon comes in between the earth and the sun, moon blocks the sun and if we are looking at the sun from the earth it appears to be fully covered. Therefore, solar ellipse happens.

Hence, the correct answer is **option B**.

Solution 71

Acceleration of a body is defined as rate of change of its velocity, i.e.

$$\text{Acceleration} = \frac{\text{Velocity}}{\text{Time}}$$

So, its S.I. unit will be $\frac{\text{ms}^{-1}}{\text{s}}$, or ms^{-2} .

Hence, the correct answer is option B.

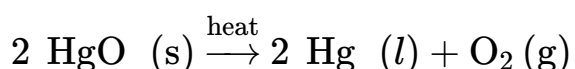
Solution 72

Mass number of an element = Number of protons + Number of neutrons
From above, number of neutrons in an atom can be calculated as,
Number of neutrons = Mass number - Number of proton
So, number of neutrons in carbon atom = $12 - 6 = 6$

Hence, the correct answer is option B.

Solution 73

A reduction reaction involves removal of oxygen, or addition of hydrogen, or gain of electrons. Among the given reactions, removal of oxygen is occurring in the third reaction, i.e.



Hence, the correct answer is option C.

Solution 74

Bisphenol A or BPA is a chemical used in the production of polycarbonate plastics. These polycarbonate plastics are used widely in food and drink packaging such as water bottles, food storage containers, plastic mugs and tablewares, etc.

Hence, the correct answer is option C.

Solution 75

The Nagarjuna Sagar Project is located on **Krishna river.**

Explanation:

Nagarjuna sagar Dam was built between 1955 to 1967 across the Krishna river at Nagarjuna Sagar which falls between Nalgonda and Guntur District.

Hence, the correct answer is **option B.**

Solution 76

Both the statements are correct .

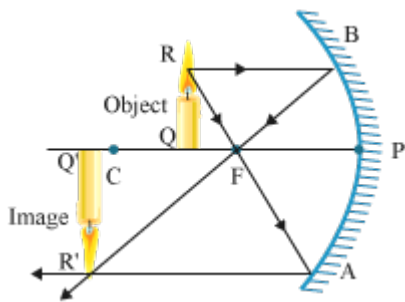
Explanation :

- (1) Rajmahal highlands are made of volcanic igneous rocks which are deposited lava.
- (2) Gneiss is formed as a result of metamorphism of the igneous rocks and Archaean rocks are the ones that are formed from hot –molten lava which are the oldest and these are formed in Bundelkhand.

Hence, the correct answer is **option C**.

Solution 77

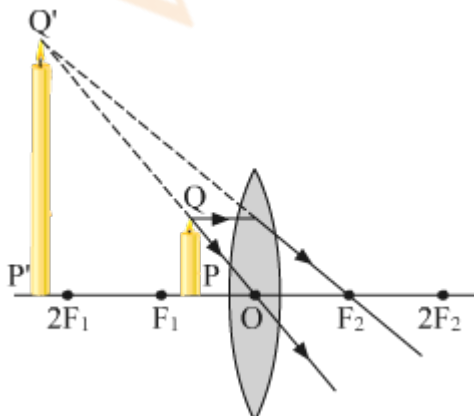
As given in the question, the focal length of the concave mirror is 16 cm. If the object is shifted from centre of curvature towards the focus by 8 cm, it will be exactly between the centre of curvature and focus. Thus the image formed will be beyond the centre of curvature, and it will be real, inverted and magnified in nature.



Hence, the correct answer is option A.

Solution 78

As per the question, the pencil is placed at a distance less than the focal length of the convex lens. So, the image of the pencil will be formed at the same side of the lens and will be virtual, erect and magnified in nature.



Hence, the correct answer is option D.

Solution 79

Among the given alternatives, the biomass energy, which is obtained by burning wood or other organic matter, comes under conventional energy source.

Hence, the correct answer is option D.

Solution 80

Acid anhydrides are the compounds that react with water to form acids. Among the given alternatives, nitrogen pentaoxide (N_2O_5) on reaction with water produces nitric acid. Therefore it is known as 'anhydride' of nitric acid.



Hence, the correct answer is option D.

Solution 81

The chemical name of baking soda is sodium hydrogen carbonate or sodium bicarbonate. It is represented by the chemical formula NaHCO_3 .

Hence, the correct answer is option A.

Solution 82

Deoxyribonucleic acid, or DNA, is a biomacromolecule that stores genetic information of an individual and thus acts as a hereditary material in almost all living organisms (except some viruses, in which RNA acts as genetic material). Nuclear DNA has a double helical structure, in which two polynucleotide chains run anti-parallel to each other. Besides nucleus, DNA is also found in mitochondria and chloroplast. However the whole length of these polynucleotide chains do not code for protein synthesis. There are some specific segments of DNA, known as genes, that code for synthesis of specific proteins.

Hence, the correct answer is option C.

Solution 83

Survey of India is the organisation prepares the topographical maps of India.

Explanation:

Survey of India is the national survey and mapping organization under

the department of science and technology.

Hence, the correct answer is **option C**.

Solution 84

Dresden Line is not an international boundary line.

Explanation:

Dresden Line is referred to the Dresden transportation Line whereas other options are the names international boundary lines.

Hence, the correct answer is **option A**.

Solution 85

In a plane mirror, the image is always formed behind the mirror, at a distance equal to the distance of object from mirror. So, if initial distance between the lady and the mirror was 1 m, the distance between the mirror and image was also 1 m.

Now, when lady moves 60 cm towards the mirror, the distance between her and mirror becomes 40 cm. So, the distance of image from the mirror will also be 40 cm. Thus, the distance between the lady and her distance will be 80 cm (ignoring the thickness of the mirror).

Hence, the correct answer is option C.

Solution 86

The brightness of a star is directly proportional to its size and temperature. So, greater is its size or higher is its temperature, higher will be the brightness of the star. It also depends on the distance of star from the Earth. Shorter the distance between star and the Earth, brighter the star will appear.

Hence, the correct answer is option D.

Solution 87

The process of conversion of a solid directly into a gas upon heating is known as sublimation.

Hence, the correct answer is option C.

Solution 88

Water gas is a combustion fuel which consists of carbon monoxide and hydrogen. It is prepared by passing steam over hot coke.

Hence, the correct answer is option A.

Solution 89

In honey bees, the males are produced from unfertilised eggs, and thus are haploid in nature. The worker bees, though diploid, lack the reproductive capacity and are sterile. At larval stage, the workers and queen bee are identical as they both are diploid. Whether the growing larva will become fertile queen bee or sterile worker bee is determined by the type of food it feeds on. Where the future queen bee is fed entirely on royal jelly, other larvae are fed different combinations of royal jelly, pollen, and nectar. The honey collection and its storage is entirely the job of sterile worker bees.

Hence, the correct answer is option C.

Solution 90

The Amarkantak Hills are the source of rivers like **Narmada,**
Mahanadi, Son.

Explanation :

Amarkantak Hills situated in Madhya Pradesh is the place where the three rivers Narmada, Mahanadi and Son originate.

Hence, the correct answer is **option D.**

Solution 91

An equinox is an astronomical event in which the day and night are of approximately equal length all over the Earth. This phenomenon occurs twice a year, one around 21 March, which is known as vernal equinox, and other on 23 September, which is known as autumnal equinox.

Hence, the correct answer is option B.

Solution 92

The glass vessel will break down as the water inside it will expand on freezing. With water filled up to the rim of the vessel, and lid closed very tightly, there will be no space left for expansion inside vessel. So the ice formed upon freezing will exert pressure on the vessel's walls, due to which it will break down eventually.

Hence, the correct answer is option C.

Solution 93

According to Ohm's Law,

$$V = IR$$

where, V = Voltage

I = Current

and R = Resistance

As given in the question, $V = 12 \text{ V}$

$$R = 24 \Omega$$

$$\text{So, } 12 = I \times 24$$

$$I = \frac{V}{R} = \frac{12}{24} = 0.5 \text{ A}$$

Hence, the correct answer is option A.

Solution 94

When connected in parallel circuit, the equivalent resistance of the system is given as:

$$\frac{1}{R} = \frac{1}{R_1} + \frac{1}{R_2} + \frac{1}{R_3}$$

$$\frac{1}{R} = \frac{1}{2} + \frac{1}{4} + \frac{1}{8} = \frac{7}{8}$$

$$\text{So, } R = \frac{8}{7} = 1.14 \Omega$$

Hence, the correct answer is option A.

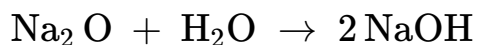
Solution 95

Phenolphthalein is a colourless, weak acid which is used as an acid-base indicator. It turns pink in the presence of a basic solution. As per the information given in the question, solution B contains an alkaline solution, or basic solution. Thus it will change the colourless phenolphthalein solution into pink colour.

Hence, the correct answer is option B.

Solution 96

Oxides of s-block elements are known to be soluble in water. Out of the given alternatives, sodium is a s-block element, hence its oxide dissolves in water to form a basic solution of sodium hydroxide.



Hence, the correct answer is option D.

Solution 97

Cholesterol is a waxy, fat-like substance that is found in almost all the body cells. It plays vital roles in cell functions. High cholesterol levels in blood are well known to increase the risk of heart diseases in an individual. However, HDL or high density lipoprotein is considered as the good cholesterol, as it carries cholesterol from all over the body back to the liver, from where it is eventually removed from the body. So it is important to have high HDL levels in the blood.

Hence, the correct answer is option A.

Solution 98

Spruce and Cedar trees are found in the temperate coniferous forests. These forests are found in the temperate regions with warm summers, cool winters and adequate amount of rainfall.

Hence, the correct answer is option B.

Solution 99

'Sal' tree is a **Moist deciduous tree**

Explanation :

Sal tree requires well drained moist and sandy loam soil. It requires these conditions to grow, therefore it is a moist deciduous tree.

Hence, the correct answer is **option D**

Solution 100

The compressibility of a matter depends on its intermolecular space. Since in gaseous state, the intermolecular space is highest, gases show maximum compressibility, followed by liquids, which have slightly tightly packed molecules, and then solids, which have almost no intermolecular space.

Hence, the correct answer is option B.

Solution 101

Melting point of a solid is directly proportional to the strength of intermolecular attraction. Higher is the strength of attraction among the constituent particles of a solid, more energy will be required to overcome

this attraction, and hence, higher will be the melting point.

Hence, the correct answer is option A.

Solution 102

The first three resistors in the circuit are connect in parallel combination. So the equivalent resistance will be:

$$\frac{1}{R_p} = \frac{1}{R_1} + \frac{1}{R_2} + \frac{1}{R_3}$$

$$\frac{1}{R_p} = \frac{1}{2} + \frac{1}{4} + \frac{1}{6} = \frac{11}{12}$$

$$\text{So, } R_p = \frac{12}{11} \Omega$$

Now, the equivalent resistance of the parallel circuit is in series combination with a 8Ω resistor.

So, the equivalent resistance of the circuit will be:

$$R_{\text{total}} = 8 + \frac{12}{11} = \frac{100}{11} = 9\frac{1}{11} \Omega$$

Hence, the correct answer is option C.

Solution 103

Among the following elements, mercury (Hg) is placed below hydrogen in the reactivity series. Thus it will not react with HCl to replace hydrogen and produce H_2 .

Hence, the correct answer is option A.

Solution 104

Malaria is spread by the bite of female *Anopheles* mosquito. Chikungunya is known to spread by the bite of mosquitoes of species *Aedes aegypti*. Filariasis is spread by a number of mosquito species, such as *Anopheles*, *Aedes*, and *Culex*. Sleeping sickness or trypanosomiasis is known to be spread by the bite of tsetse flies.

Hence, the correct answer is option B.

Solution 105

All Echinoderms are exclusively marine. Sponges, though abundantly found in marine ecosystem, are found in fresh waters as well. Insects, which make the largest group of Animal Kingdom, are known to be found

in almost all types of habitats on the Earth. Primates, which include monkeys, lemurs, and apes, are well known arboreal (except humans), as they mostly live and feed on trees.

Hence, the correct answer is option B.

Solution 106

Areas which are engines of economic growth supported by quality infrastructure and complemented by an attractive fiscal package are known as **Special Economic Zones.**

Explanation:

Special economic zone is an area in which special business and trade laws are applicable as compared to the rest of the country.

Hence, the correct answer is **option C.**

Solution 107

Deserts, fertile plains, and moderately forested mountains are the characteristic features of **North-Western India.**

Explanation:

North-Western India comprises of states like Rajasthan, which has desert region . The fertile plains are present in Punjab and Haryana and moderate forest are situated in state like Utarakhand.

Hence, the correct answer is **option D.**

Solution 108

As given, the initial velocity of car (u) = 0

Final velocity of the car = 50 m/s

Time taken (t) = 25 s

According to the first equation of motion,

$$v = u + at$$

$$50 = 0 + a \times 25$$

$$\text{So, } a = \frac{50}{25} = 2 \text{ m/s}^2$$

Thus the uniform acceleration of the car is 2 m/s^2 .

Now, according to the second equation of motion,

$$s = ut + \frac{1}{2}at^2$$

$$s = 0 \times 25 + \frac{1}{2} \times 2 \times (25)^2 = \frac{1}{2} \times 2 \times (25)^2 = 625 \text{ m}$$

So, distance (s) covered by the car = 625 m

Hence, the correct answer is option A.

Solution 109

If the cable of the lift breaks suddenly, the man in the lift will fall freely. During free fall motion, the weight of the body will become zero, and thus the man will experience weightlessness.

Hence, the correct answer is option D.

Solution 110

We know that heat generated in a current carrying conductor is given by the Joule's law, i.e.

$$H = I^2Rt$$

where, R = Resistance of the coil,
and t = time in which the current flows through the wire

$$\text{So, } 2000 = (1)^2 \times Rt \quad \dots\dots(i)$$

From equation (i), value of Rt can be found, i.e.

$$Rt = 2000$$

Now, if the amount of current is doubled, amount of heat produced will be:

$$H = (2)^2 \times Rt \quad \dots\dots(ii)$$

Putting the value of Rt in equation (ii),

$$H = 4 \times 2000 = 8000 \text{ J.}$$

Hence, the correct answer is option C.

Solution 111

Sooty flames are given out by unsaturated hydrocarbons with high carbon content. Among the given compounds, hexane is a saturated carbon compound and does not give out sooty flames.

Hence, the correct answer is option B.

Solution 112

Proteins are made up of several residues of amino acid, so upon digestion, they break down back into amino acids. Similarly carbohydrates break down into their basic units, i.e. monosaccharides. Lipids, being composed of fatty acids and glycerol, break down into the same. Nucleic acids break down into nitrogenous bases and pentose sugars.

Hence, the correct answer is option D.

Solution 113

In the Thar region, the shifting sand dunes are locally known as **Dhrian.**

Hence, the correct answer is **option A**

Solution 114

The impulse on a particle due to a force acting on it during a given time interval is equal to the change in its momentum.

Hence, the correct answer is option B.

Solution 115

Usually substances expand on heating and contract on cooling. However, water shows an anomalous behaviour during temperature 0°C to 4°C . When ice melts, it first contracts from 0°C to 4°C , and then expands upto 100°C .

Hence, the correct answer is option A.

Solution 116

Ranthambore: Tiger and Periyar: Elephant are the rightly matched options.

Explanation:

(1) Ranthambore, which was initially established as Sawai Madhopur

Game Sanctuary in 1955 started as one of the project "Tiger Reserves" .
(2) Periyar National Park in the Western Ghats of Kerala is a notable elephant reserve.

Hence, the correct answer is **option B.**

Solution 117

Nuclear energy is not a form of stored energy. It is obtained either by breaking a large nucleus into smaller ones, or by formation of a heavy nucleus by fusion of two light nuclei.

Hence, the correct answer is option A.

Solution 118

The distance covered by the car from point O to point C = 60 km

The distance covered by the car from point C to point B = $60 - 35 = 25$ km

Thus, the total distance covered by the car = $60 + 25 = 85$ km

Since the car started its motion from point O and its final position was point B, thus,

Displacement of the car = Distance between points O and B, i.e. 35 km

Hence, the correct answer is option D.

Solution 119

Jelep La pass is located in **Sikkim Himalaya.**

Explanation:

Jelep La Pass is a high mountain pass situated at a height of about 150 feet between East Sikkim District and Tibet.

Hence, the correct answer is **option B.**

Solution 120

Six atoms of hydrogen, or 3 moles of H_2 are required to saturate one mole of benzene into cyclohexane.

Hence, the correct answer is option D.

Solution 121

Schedule:Second Schedule

Content:The forms of oaths and affirmations

This pair doesnot match with each other.

Explanation :

Second schedule lists the salaries of the constitutional offices such as that of the President, Vice President etc.

Hence, the correct answer is **option B.**

Solution 122

Both 1 and 2 are the correct statements.

Explanation :

(1) Article 3 of the Indian Constitution hold the provisions to create new states through approval of the bill in the parliament.

(2) Article 370 in part XXI of the constitution provides special status to J & K .

Hence, the correct answer is **option C.**

Solution 123

The Speaker of the Lok Sabha may resign his office in writing, addressed to the Deputy Speaker of the Lok Sabha.

Explanation :

According to the rules and regulations about functioning of the Lok Sabha , both speaker and deputy speaker can address their resignation letter to each other while resigning from their post.

Hence, the correct answer is **option D.**

Solution 124

Kailash Satyarthi is the founder of the 'Bachpan Bachao Andolan'.

Explanation :

Bachpan Bachao Andolan is India's largest movement at grass root level

for protection of children, which was started by Kailash Satyarthi in 1980.

Hence, the correct answer is **option B**.

Solution 125

The following statements are true about Jan Dhan Yojna:

- 1.Ensuring financial inclusion of the poor**
- 2.Enhancing financial literacy**
- 3.Provision for accidental insurance to the account-holders**
- 4.Allowing bank accounts with zero balance**

Explanation:

Basic objective of Pradhan Mantri Jan Dhan Yojana is ensuring access of the people to various financial schemes.

Hence, the correct answer is **option D**.

Solution 126

According to Election Commission political party needs to fulfil the following criteria to become the national level party Election Commission

- it secures at least six percent of the total valid votes polled in**
- 1.four or more States in a general election to the Lok Sabha or to the State Legislative Assemblies.**
- 2.it wins at least four seats in a general election to the Lok Sabha**
- from any State or States**

Explanation :

National parties are recognized by the election commission only if they fulfill certain criteria. There are only 6 national level parties which have hold in more than one state.

Hence, the correct answer is **option C**.

Solution 127

Industrial deregulation and disinvestment in the public sector is

not a feature of the Nehru-Mahalanobis model of a development strategy.

Explanation:

This model emphasized development of heavy industries which would direct Indian economy on higher growth path. This also helped in development of public sector.

Hence, the correct answer is **option C**.

Solution 128

Faster, Sustainable and More Inclusive Growth best explains the stated broad vision and aspirations of the Twelfth Five-Year Plan (2012-2017).

Explanation:

India plans to reduce poverty eliminate gender gaps and improve regional equality for that its broad vision is to foster sustainable and more inclusive growths .

Hence, the correct answer is **option A**.

Solution 129

Nabhha Sparsham Diptam is the motto of **Indian Air Force**.

Explanation:

Nabhah sparsam Deeptam which means touch the sky with glory is the motto of Indian Air Force.

Hence, the correct answer is **option B**.

Solution 130

The Amendment procedure has been provided in Article 368 of the Constitution of India is the correct statement.

Explanation:

Part XX comprising of Article 368 lays down the provision for amendment of the constitution of India.

Hence, the correct answer is **option A.**

Solution 131

The CAG can attend the sittings of the Committee on Public Accounts is the correct statement relating to the Comptroller and Auditor General (CAG) of India.

Explanation:

Public Accounts Committee has 22 members and it examines the audit reports of CAG

Hence, the correct answer is **option A.**

Solution 132

All the following statements relating to election as the President of India.

1. **A person above the age of thirty-five years is eligible for election as the President of India.**
2. **The President of India is eligible for re-election for more than one term.**
3. **A person is not eligible for election as the President of India if the person holds an office of profit.**

Explanation:

Article 58 of the constitution of India lists down the criteria /qualifications to become the president of India.

Hence, the correct answer is **option C.**

Solution 133

Napal adopted its first democratic Constitution in September 2015.

Hence, the correct answer is **option C**.

Solution 134

Roger Federer was defeated by Novak Djokovic in the final of the US Open Tennis Tournament Men's Singles event (2015).

Explanation:

Roger Federer was defeated by Novak Djokovic in US open held in New York in 2015. Final score was 6-4, 5-7, 6-4, 6-4.

Hence, the correct answer is **option C**.

Solution 135

The citizens of India do not have **Right to acquire, hold and dispose of property** as their Fundamental Right.

Explanation :

With the 44th Amendment of constitution , 1978 right to property was removed from being a fundamental right.

Hence, the correct answer is **optionB**.

Solution 136

The **Charter Act, 1833** for the first time allowed Indians, at least theoretically, entry to higher posts in British Indian administration.

Explanation:

Section 87 of the Charter Act, 1833 permitted Indians to be appointed for higher services on the basis of their ability and not disqualified on the basis of race and religion.

Hence, the correct answer is **option B**.

Solution 137

Neither statement 1 nor 2 about Rashtrakuta kings is correct.

Explanation:

The Rashtrakuta kings were inspired by Hinduism and later on by Jainism

Hence, the correct answer is **option D**.

Solution 138

After a ban on unscientific coal-mining and transportation of coal in **Jaintia Hills, Meghalaya** by the National Green Tribunal, many of those engaged in the activity have been switching to turmeric farming for their livelihood.

Explanation :

National Green Tribunal had issued interim ban on "rat hole" coal mining in Meghalaya since April 2014 and has banned illegal coal mining in Jaintia Hills.

Hence, the correct answer is **option A**.

Solution 139

" It began when Mangal Pandey fired at a European officer in Barrackpore. " statement about the first Act of the Revolt in 1857 is/are true.

Explanation:

On 29th March 1857 , Mangal Pandey shot British sergeant in a ground in Kolkata.

Hence, the correct answer is **option C**.

Solution 140

1. Hind Swaraj offers a civilisational concept of the Indian nation.

3. Hind Swaraj argues that Industrial capitalism was responsible for the immorality of society.

Statement 1 and 3 about Gandhiji's Hind Swaraj written in 1909 is/are true.

Explanation:

Hind swaraj or the Indian Home Rule is the book written by Gandhiji in 1909, in which he talks about his views on modern civilization, mechanization, swaraj etc.

Hence, the correct answer is **option C**.

Solution 141

1. specialised economic activity.

3. involving everyone in many of the same activities.

individuals engage in only a single activity and are dependent on

4. others to meet their various needs.

The statements 1, 3 and 4 relating to Division of labour are correct.

Explanation:

Specialization of the participants is the main objective of the concept of division of labour.

Hence, the correct answer is **option C**.

Solution 142

Narendra Dabholkar is associated with 'Maharashtra Andhashraddha Nirmoolan Samiti'.

Explanation:

In 1989, Narendra Dabholkar founded the Maharashtra Andhashraddha Nirmoolan Samiti.

Hence, the correct answer is **option B**.

Solution 143

Both 1 and 2 are correct.

1. Warren Hastings set up the Calcutta Madrasa for the study and teaching of Muslim- law-related subjects.
2. Jonathan Duncan started a Sanskrit College at Varanasi for the study of Hindu law and philosophy.

Explanation:

(1) Warren Hastings set up the Calcutta Madarsa in 1781.

(2) Jonathan Duncan proposed to establish the Sanskriti college in 1791.

Hence, the correct answer is **option C**.

Solution 144

Both 1 and 2 are correct

1. Pilgrimage called ziyarat to tombs of Sufi saints is an important feature.
2. The most influential group of Sufis in India were the Chishtis.

Explanation:

Pilgrimage to the sites associated with Muhammad or his family members is called Ziyarat.

Hence, the correct answer is **option C**

Solution 145

The codes 1,2 and 4 are correct

Explanation :

Gandhiji's political ideas revolved around his philosophy of truth and

non- violence. He was also the supporter of equality.

Hence, the correct answer is **option C**.

Solution 146

Statement 1 only is correct.

1.The Arthashastra is the first Indian text to define a State.

Explanation:

Arthashastra written by Chanakya emphasis on statecraft, economic policy and military strategy. This book is written in Sanskrit.

Hence, the correct answer is **option A**.

Solution 147

Code 1 only is correct.

Therefore statement "Permission of 100 percent FDI in automotive sector" is correct.

Explanation :

Permission of 100% FDI in automotive sector was given in 2002.

Hence, the correct answer is **option A**.

Solution 148

Statement code 1 is correct.

Therefore, statement " Strengthening of sub-transmission and distribution networks in the urban areas" is correct.

Explanation:

Integrated power development scheme launched by government of India in 2014 visions to strengthen the sub- transmission and distribution network in the urban areas.

Hence, the correct answer is **option A.**

Solution 149

Statement code 1 is correct.

Therefore, statement " The Brahmo Marriage Act of 1872 allowed inter-caste and widow re-marriage only if the contracting parties declared themselves to be non-Hindus" is correct.

Explanation :

Brahmosamaj started with the marriage Act 1872 which validated inter-caste marriage.

Hence, the correct answer is **option A.**

Solution 150

Statement code 2 is correct.

Therefore, statement " To achieve international co-operation in solving problems of an economic, social, cultural, or humanitarian character" is correct.

Explanation:

The main aim of UN is to maintain peace worldwide ,fostering cooperation between nations for economic, social and cultural development in the world.

Hence, the correct answer is **option C.**